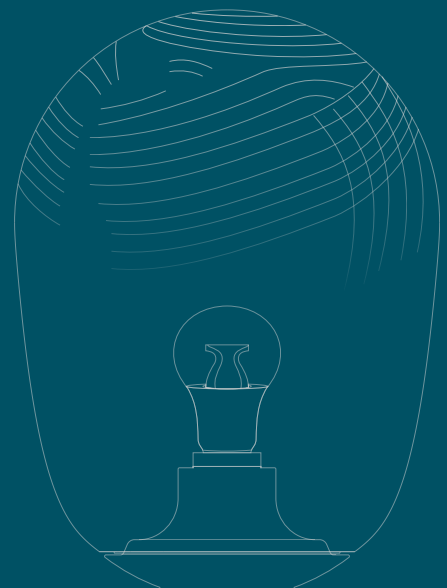


# MATH LAMPS

CAUTIC SERIES

GERMAN  
DESIGN  
AWARD  
SPECIAL  
2019



# MATH LAMPS

CAUSTIC SERIES

Design by INPPUT



## MATH LAMPS OVAL, MATH LAMPS CIRCULAR

The Caustics Lamps are an excellent example of the brand's philosophy. It is a high-tech/low-tech approach, where craftsman practices are mixed with technological processes. The forms and textures are developed through algorithms that generate not only generative patterns, but also potentiate the effects of the caustics. The pieces were delicately worked on by master glassmakers that shaped the glass according to this new aesthetic.



# MATH LAMPS

CAUSTIC SERIES

## Materials

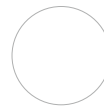
- Glass



For a Better Caustic Effects we recomend:  
Philips LED Warm White

## Colors:

### Colors



BLACK POWDER  
COATED STEEL



BLACK POWDER  
COATED STEEL



BLACK POWDER  
COATED STEEL



BLACK POWDER  
COATED STEEL



BLACK POWDER  
COATED STEEL



Table



Ceiling



Wall



Floor



Suspended



Foot

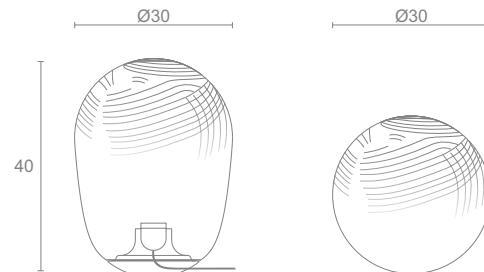
# MATH LAMPS

CAUSTIC SERIES

## Dimensions (cm)

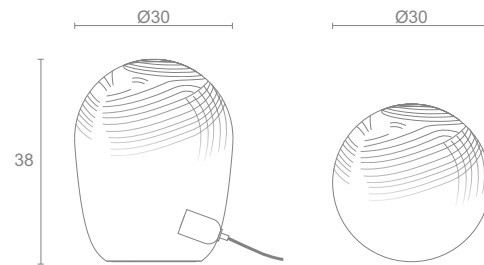
Oval + base

Height - 40  
Width - Ø30



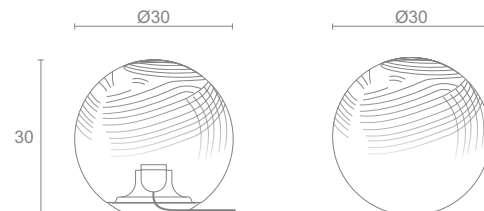
Oval

Height - 38  
Width - Ø30



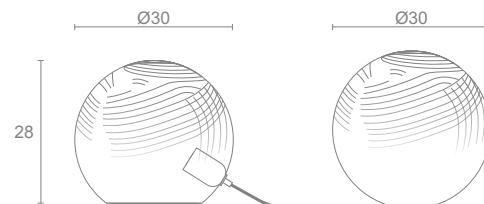
Spherical + base

Height - 30  
Width - Ø30



Spherical

Height - 28  
Width - Ø30



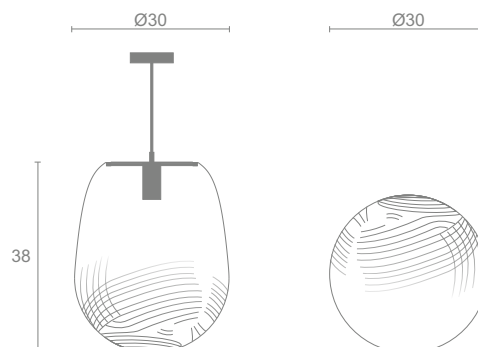
# MATH LAMPS

CAUSTIC SERIES

## Dimensions (cm)

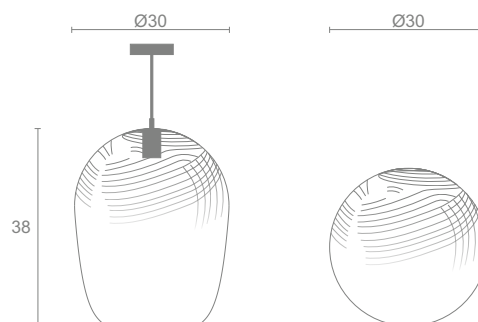
### Oval Suspense 1

Height - 38  
Width - Ø30



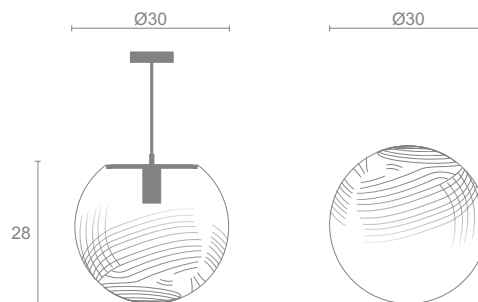
### Oval Suspense 2

Height - 38  
Width - Ø30



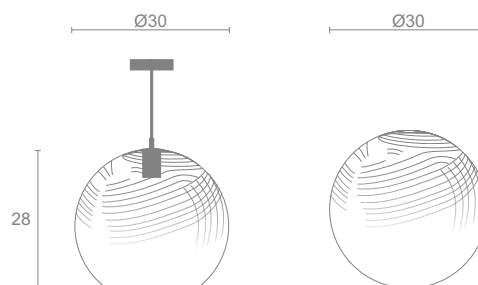
### Spherical Suspense 1

Height - 28  
Width - Ø30



### Spherical Suspense 2

Height - 28  
Width - Ø30



INPPUT.PT

